



6. TOWN OF JUNIUS

This jurisdictional annex to the Seneca County Hazard Mitigation Plan (HMP) provides information to assist public and private sectors in the Town of Junius with reducing losses from future hazard events. This annex is not guidance of what to do when a disaster occurs; its focus is on actions that can be implemented prior to a disaster to reduce or eliminate damage to property and people. The annex presents a general overview of the Town of Junius, describes who participated in the planning process, assesses the Town of Junius’ risk, vulnerability, and capabilities, and outlines a strategy for achieving a more resilient community.

6.1 HAZARD MITIGATION PLANNING TEAM

The Town of Junius identified the hazard mitigation plan (HMP) primary and alternate points of contact and developed this plan over the course of several months with input from many Town departments, including the Highway Department. The Town Supervisor represented the community on the Seneca County Hazard Mitigation Plan Planning Partnership and supported the local planning process requirements by securing input from persons with specific knowledge to enhance the plan. All departments were asked to contribute to the annex development through reviewing and contributing to the capability assessment, reporting on the status of previously identified actions, and participating in action identification and prioritization.

summarizes Town officials who participated in the development of the annex and in what capacity. Additional documentation of the Town’s planning activities through Planning Partnership meetings is included in Volume I.

Table 6-1. Hazard Mitigation Planning Team

Primary Point of Contact	Alternate Point of Contact
Name/Title: Ernie Brownwell, Town Supervisor Address: 655 Dublin Road, Clyde NY 14433 Phone Number: (315) 952-0235 Email: cbrownell2@co.seneca.ny.us	Name/Title: David Fisk, Highway Superintendent Address: 655 Dublin Road, Clyde NY 14433 Phone Number: 315-539-9021 Email: djfiskconstruction@yahoo.com
<i>National Flood Insurance Program Floodplain Administrator</i>	
The Town does not participate in the NFIP.	

6.2 COMMUNITY PROFILE

The Town of Junius is located in the northwestern corner of the County. The Town consists of 26.9 square miles, 26.7 of which are land and 0.1 of which are water. Junius was part of the Central New York Military Tract used to pay soldiers of the American Revolution. The region was first settled around 1795. The southern Town line borders the Town of Waterloo, the eastern Town line borders the Town of Tyre, the western Town line borders Ontario County and the northern Town line borders Wayne County.

According to the U.S. Census, the 2020 population for the Town of Junius was 1,388. Data from the 2020 U.S. Census indicate that 4.9 percent of the population is 5 years of age or younger, 11.4 percent is 65 years of age or older, 0.1 percent is non-English speaking, 11.1 percent is below the poverty threshold, and 11.6 percent is considered disabled. Communities must deploy a support system that enables all populations to safely reach shelters or to quickly evacuate a hazard area.



6.3 JURISDICTIONAL CAPABILITY ASSESSMENT AND INTEGRATION

The Town of Junius performed an inventory and analysis of existing capabilities, plans, programs, and policies that enhance its ability to implement mitigation strategies. Volume I describes the components included in the capability assessment and their significance for hazard mitigation planning. The jurisdictional assessment for this annex includes analyses of the following:

- Planning and regulatory capabilities
- Development and permitting capabilities
- Administrative and technical capabilities
- Fiscal capabilities
- Education and outreach capabilities
- Classification under various community mitigation programs
- Adaptive capacity to withstand hazard events

For a community to succeed in reducing long-term risk, hazard mitigation must be integrated into day-to-day local government operations. As part of the hazard mitigation analysis, planning and /policy documents were reviewed and each jurisdiction was surveyed to obtain a better understanding of their progress toward plan integration. Development of an updated mitigation strategy provided an opportunity for the Town of Junius to identify opportunities for integrating mitigation concepts into ongoing Town procedures.

6.3.1 Planning and Regulatory Capability and Integration

Table 6-2 summarizes the planning and regulatory tools that are available to the Town of Junius.

Table 6-2. Planning and Regulatory Capability and Integration

	Jurisdiction has this? (Yes/No)	Citation and Date (code chapter or name of plan, date of enactment or plan adoption)	Authority (local, county, state, federal)	Individual / Department / Agency Responsible
Codes, Ordinances, & Regulations				
Building Code	Yes	Uniform Fire Prevention and Building Code, 2021	State and County	NYS Division of Building Standards and Codes or Seneca County Building Codes Enforcement
<i>How has or will this be integrated with the HMP and how does this reduce risk?</i>				
Strong building codes for fire prevention, the widening use of smoke detectors and sprinklers and development of fire-resistant building materials represent fire mitigation actions that have made a huge impact on reducing private and public losses from fires. Strengthened building codes in floodplains, managing development in a way that recognizes flood risks and infrastructure improvements that prevent or resist flood damage are very cost-effective mitigation goals for any community.				
Zoning/Land Use Code	No	-	-	-
<i>How has or will this be integrated with the HMP and how does this reduce risk?</i>				
N/A				



	Jurisdiction has this? (Yes/No)	Citation and Date (code chapter or name of plan, date of enactment or plan adoption)	Authority (local, county, state, federal)	Individual / Department / Agency Responsible
Subdivision Code	No	-	-	-
<i>How has or will this be integrated with the HMP and how does this reduce risk?</i> N/A				
Site Plan Code	No	-	-	-
<i>How has or will this be integrated with the HMP and how does this reduce risk?</i> N/A				
Stormwater Management Code	No	-	-	-
<i>How has or will this be integrated with the HMP and how does this reduce risk?</i> N/A				
Post-Disaster Recovery/ Reconstruction Code	No	-	-	-
<i>How has or will this be integrated with the HMP and how does this reduce risk?</i> N/A				
Real Estate Disclosure Requirements	Yes	Property Condition Disclosure Act, NY Code - Article 14 §460-467	State	NYS Department of State, Real Estate Agent
<i>How has or will this be integrated with the HMP and how does this reduce risk?</i> In addition to facing potential liability for failing to disclose under the exceptions to “caveat emptor,” a home seller must make certain disclosures under the law or pay a credit of \$500 to the buyer at closing. While the PCDA requires a seller to complete a standardized disclosure statement and deliver it to the buyer before the buyer signs the final purchase contract, in practice, most home sellers in New York opt not to complete the statement and instead pay the credit.				
Growth Management	No	-	-	-
<i>How has or will this be integrated with the HMP and how does this reduce risk?</i> N/A				
Environmental Protection Ordinance(s)	No	-	-	-
<i>How has or will this be integrated with the HMP and how does this reduce risk?</i> N/A				
Flood Damage Prevention Ordinance	No	-	-	-
<i>How has or will this be integrated with the HMP and how does this reduce risk?</i> N/A				
Wellhead Protection	No	-	-	-
<i>How has or will this be integrated with the HMP and how does this reduce risk?</i> N/A				
Emergency Management Ordinance	No	-	-	-
<i>How has or will this be integrated with the HMP and how does this reduce risk?</i> N/A				
Climate Change Ordinance	No	-	-	-
<i>How has or will this be integrated with the HMP and how does this reduce risk?</i>				



	Jurisdiction has this? (Yes/No)	Citation and Date (code chapter or name of plan, date of enactment or plan adoption)	Authority (local, county, state, federal)	Individual / Department / Agency Responsible
N/A				
Other	Yes	The Right to Farm, Local Law 2 of 2013	Local	Agricultural Advisory Committee
<i>How has or will this be integrated with the HMP and how does this reduce risk?</i>				
It is the general purpose and intent of this law to maintain and preserve the rural traditions and character of the Town of Junius, to permit the continuation of agricultural practices, to protect the existence and operation of farms, to encourage the initiation and expansion of farms and agri-businesses, and to promote new ways to resolve disputes concerning agricultural practices and farm operations. In order to maintain a viable farming economy in the Town of Junius, it is necessary to limit the circumstances under which farming may be deemed to be nuisance and to allow agricultural practices inherent to and necessary for the business of farming to proceed and be undertaken free of unreasonable and unwarranted interferences or restriction.				
Planning Documents				
General/Comprehensive Plan	Yes	Town of Junius Comprehensive Plan, 2016	Local	Town Board
<i>How has or will this be integrated with the HMP and how does this reduce risk?</i>				
The Town of Junius Comprehensive Plan helps guide the ways in which a growing community will continue to expand in a safe and hazard resistant manner while considering the input of the public.				
Capital Improvement Plan	No	-	-	-
<i>How has or will this be integrated with the HMP and how does this reduce risk?</i>				
N/A				
Disaster Debris Management Plan	No	-	-	-
<i>How has or will this be integrated with the HMP and how does this reduce risk?</i>				
N/A				
Floodplain Management or Watershed Plan	No	-	-	-
<i>How has or will this be integrated with the HMP and how does this reduce risk?</i>				
N/A				
Stormwater Management Plan	No	-	-	-
<i>How has or will this be integrated with the HMP and how does this reduce risk?</i>				
N/A				
Open Space Plan	No	-	-	-
<i>How has or will this be integrated with the HMP and how does this reduce risk?</i>				
N/A				
Urban Water Management Plan	No	-	-	-
<i>How has or will this be integrated with the HMP and how does this reduce risk?</i>				
N/A				
Habitat Conservation Plan	No	-	-	-
<i>How has or will this be integrated with the HMP and how does this reduce risk?</i>				
N/A				
Economic Development Plan	No	-	-	-



	Jurisdiction has this? (Yes/No)	Citation and Date (code chapter or name of plan, date of enactment or plan adoption)	Authority (local, county, state, federal)	Individual / Department / Agency Responsible
<i>How has or will this be integrated with the HMP and how does this reduce risk?</i>				
N/A				
Community Wildfire Protection Plan	No	-	-	-
<i>How has or will this be integrated with the HMP and how does this reduce risk?</i>				
N/A				
Community Forest Management Plan	No	-	-	-
<i>How has or will this be integrated with the HMP and how does this reduce risk?</i>				
N/A				
Transportation Plan	No	-	-	-
<i>How has or will this be integrated with the HMP and how does this reduce risk?</i>				
N/A				
Agriculture Plan	No	-	-	-
<i>How has or will this be integrated with the HMP and how does this reduce risk?</i>				
N/A				
Climate Action/ Resiliency/Sustainability Plan	No	-	-	-
<i>How has or will this be integrated with the HMP and how does this reduce risk?</i>				
N/A				
Tourism Plan	No	-	-	-
<i>How has or will this be integrated with the HMP and how does this reduce risk?</i>				
N/A				
Business/ Downtown Development Plan	No	-	-	-
<i>How has or will this be integrated with the HMP and how does this reduce risk?</i>				
N/A				
Other	No	-	-	-
<i>How has or will this be integrated with the HMP and how does this reduce risk?</i>				
N/A				
Response/Recovery Planning				
Emergency Operations Plan	Yes	Seneca County Comprehensive Emergency Management Plan	County	Seneca County Emergency Management Office
<i>How has or will this be integrated with the HMP and how does this reduce risk?</i>				
The Emergency Operations Plan aims to assess the Town's ability to respond to emergency and identifies recommendations to improve its capacity to prepare and respond to future events. The plan address both short- and long-term recovery.				
Continuity of Operations Plan	No	-	-	-
<i>How has or will this be integrated with the HMP and how does this reduce risk?</i>				
N/A				



	Jurisdiction has this? (Yes/No)	Citation and Date (code chapter or name of plan, date of enactment or plan adoption)	Authority (local, county, state, federal)	Individual / Department / Agency Responsible
Substantial Damage Response Plan	No	-	-	-
<i>How has or will this be integrated with the HMP and how does this reduce risk?</i> N/A				
Threat & Hazard Identification & Risk Assessment (THIRA)	No	-	-	-
<i>How has or will this be integrated with the HMP and how does this reduce risk?</i> N/A				
Post-Disaster Recovery Plan	No	-	-	-
<i>How has or will this be integrated with the HMP and how does this reduce risk?</i> N/A				
Public Health Plan	Yes	Seneca County Pandemic Plan	County	
<i>How has or will this be integrated with the HMP and how does this reduce risk?</i> The plan was developed based on best practices and guidance available largely as a result of the SARS-CoV-2 Pandemic. The plan is intended to provide ongoing guidance for the current pandemic as well as future guidance for any other infectious disease outbreaks requiring a state and/or county emergency declaration.				
Other	No	-	-	-
<i>How has or will this be integrated with the HMP and how does this reduce risk?</i> N/A				

6.3.2 Development and Permitting Capability

Table 6-3 summarizes the capabilities of the Town of Junius to oversee and track development.

Table 6-3. Development and Permitting Capability

Indicate if your jurisdiction implements the following	Yes/No	Comment:
Do you issue development permits?	No	-
<ul style="list-style-type: none"> If you issue development permits, what department is responsible? 	N/A	-
<ul style="list-style-type: none"> If you do not issue development permits, what is your process for tracking new development? 	N/A	The County issues development permits
Are permits tracked by hazard area? (For example, floodplain development permits.)	Yes	Floodplain is tracked
Do you have a buildable land inventory?	No	-
<ul style="list-style-type: none"> If you have a buildable land inventory, please describe 	N/A	-
Describe the level of build-out in your jurisdiction.	N/A	None



6.3.3 Administrative and Technical Capability

Table 6-4 summarizes potential staff and personnel resources available to the Town of Junius and their current responsibilities that contribute to hazard mitigation.

Table 6-4. Administrative and Technical Capabilities

Resources	Available? (Yes/No)	Comments (available staff, responsibilities, support of hazard mitigation)
Administrative Capability		
Planning Board	Yes	
Zoning Board of Adjustment	No	-
Planning Department	No	-
Mitigation Planning Committee	No	-
Environmental Board/Commission	No	-
Open Space Board/Committee	No	-
Economic Development Commission/Committee	No	-
Public Works/Highway Department	Yes	Highway Superintendent
Construction/Building/Code Enforcement Department	No	-
Emergency Management/Public Safety Department	Yes	County Emergency Management
Maintenance programs to reduce risk (stormwater maintenance, tree trimming, etc.)	No	-
Mutual aid agreements	No	-
Human Resources Manual - Do any job descriptions specifically include identifying or implementing mitigation projects or other efforts to reduce natural hazard risk?	No	-
Other	No	-
Technical/Staffing Capability		
Planners or engineers with knowledge of land development and land management practices	No	-
Engineers or professionals trained in building or infrastructure construction practices	No	-
Planners or engineers with an understanding of natural hazards	No	-
Staff with expertise or training in benefit/cost analysis	No	-
Professionals trained in conducting damage assessments	No	-
Personnel skilled or trained in GIS and/or Hazus applications	No	County Resource



Resources	Available? (Yes/No)	Comments (available staff, responsibilities, support of hazard mitigation)
Staff that work with socially vulnerable populations or underserved communities	Yes	Website has an accessibility box
Environmental scientist familiar with natural hazards	No	-
Surveyor(s)	No	-
Emergency Manager	Yes	County Emergency Manager
Grant writer(s)	No	-
Resilience Officer	No	-
Other (this could include stormwater engineer, environmental specialist, etc.)	No	-

6.3.4 Fiscal Capability

Table 6-5 summarizes financial resources available to the Town of Junius.

Table 6-5. Fiscal Capabilities

Financial Resources	Accessible or Eligible to Use? (Yes/No)
Community Development Block Grants (CDBG, CDBG-DR)	No
Capital improvement project funding	No
Authority to levy taxes for specific purposes	No
User fees for water, sewer, gas, or electric service	Yes
Impact fees for homebuyers or developers of new development/homes	No
Stormwater utility fee	No
Incur debt through general obligation bonds	No
Incur debt through special tax bonds	No
Incur debt through private activity bonds	No
Withhold public expenditures in hazard-prone areas	No
Other federal or state funding programs	No
Open Space Acquisition funding programs	No
Other (for example, Clean Water Act 319 Grants [Nonpoint Source Pollution])	Yes

6.3.5 Education and Outreach Capability

Table 6-6 summarizes the education and outreach resources available to the Town of Junius.

Table 6-6. Education and Outreach Capabilities

Outreach Resources	Available? (Yes/No)	Comment:
Public information officer or communications office	No	-



Outreach Resources	Available? (Yes/No)	Comment:
Personnel skilled or trained in website development	No	County Resource
Hazard mitigation information available on your website	No	County Resource – Emergency Management Website
Social media for hazard mitigation education and outreach	No	County Resource (HyperReach, Sheriff's App, social media)
Citizen boards or commissions that address issues related to hazard mitigation	No	County Resource
Warning systems for hazard events	No	County Resource (HyperReach, Sheriff's App, Social Media)
Natural disaster/safety programs in place for schools	N/A	No public/private schools, but there are Amish, Mennonite schools. The Town is unsure of their capabilities
Organizations that conduct outreach to socially vulnerable populations and underserved populations	No	County Resource – Office for Aging, DHS, Public Health and Mental Health agencies
Does the jurisdiction have any public outreach mechanisms / programs in place to inform citizens on natural hazards, risk, and ways to protect themselves during such events?	No	County Resource (HyperReach, Sheriff's App, social media)
If yes, please describe.	-	-

6.3.6 Community Classifications

Table 6-7 summarizes classifications for community programs available to the Town of Junius.

Table 6-7. Community Classifications

Program	Participating? (Yes/No)	Classification	Date Classified
Community Rating System (CRS)	No	-	-
Building Code Effectiveness Grading Schedule (BCEGS)	No	-	-
Public Protection (ISO Fire Protection Classes 1 to 10)	No	-	-
National Weather Service StormReady Certification	Yes	Seneca County is StormReady	N/A
Firewise Communities classification	No	-	-
NYSDEC Climate Smart Community	No	-	-
Other: Organizations with mitigation focus (advocacy group, non-government)	No	-	-

N/A = Not applicable
 — = Unavailable

6.3.7 Adaptive Capacity

Adaptive capacity is defined as “the ability of systems, institutions, humans and other organisms to adjust to potential damage, to take advantage of opportunities, or respond to consequences” (IPCC 2022). Each jurisdiction



has a unique combination of capabilities to adjust to, protect from, and withstand a future hazard event, future conditions, and changing risk. summarizes the adaptive capacity for each identified hazard of concern and the Town’s capability to address related actions using the following classifications:

- Strong: Capacity exists and is in use.
- Moderate: Capacity might exist; but is not used or could use some improvement.
- Weak: Capacity does not exist or could use substantial improvement

Table 6-8. Adaptive Capacity

Hazard	Adaptive Capacity - Strong/Moderate/Weak
Dam Failure	Moderate
Drought	Moderate
Earthquake	Moderate
Extreme Temperature	Moderate
Flood	Moderate
Landslide	Moderate
Severe Weather	Moderate
Severe Winter Weather	Moderate

6.4 NATIONAL FLOOD INSURANCE PROGRAM COMPLIANCE

This section provides specific information on the management and regulation of the regulatory floodplain, including current and future compliance with the National Flood Insurance Program (NFIP). The Town of Junius does not currently participate in the NFIP.

6.4.1 NFIP Statistics

Table 6-9 summarizes the NFIP policy and claim statistics for the Town of Junius.

Table 6-9. Town of Junius NFIP Summary of Policy and Claim Statistics

# Policies	0
# Claims (Losses)	0
Total Loss Payments	\$0
# Repetitive Loss Properties (NFIP definition)	0
# Repetitive Loss Properties (FMA definition)	0
# Severe Repetitive Loss Properties	0

NFIP Definition of Repetitive Loss: The NFIP defines a repetitive loss property as any insurable building for which two or more claims of more than \$1,000 were paid by the NFIP within any rolling 10-year period since 1978.

Source: NFIP 2023

Notes: Data current as of November 2023



6.4.2 Flood Vulnerability Summary

The Town of Junius does not participate in the NFIP.

6.5 GROWTH/DEVELOPMENT TRENDS

Understanding how past, current, and projected development patterns have or are likely to increase or decrease risk in hazard areas is a key component to appreciating a jurisdiction’s overall risk to its hazards of concern. Recent and expected future development trends, including major residential/commercial development and major infrastructure development, are summarized in Table 6-10 through Table 6-12.

Table 6-10. Number of Building Permits for New Construction Issued Since the Previous HMP

	New Construction Permits Issued			Total
	Single Family	Multi-Family	Other (commercial, mixed-use, etc.)	
2018				
Total Permits	3	0	30	33
Permits within SFHA	0	0	0	0
2019				
Total Permits	4	0	13	17
Permits within SFHA	0	0	0	0
2020				
Total Permits	2	0	19	21
Permits within SFHA	0	0	0	0
2021				
Total Permits	1	0	17	18
Permits within SFHA	0	0	0	0
2022				
Total Permits	2	0	18	20
Permits within SFHA	0	0	0	0

SFHA = Special Flood Hazard Area (1% flood event)

Table 6-11. Recent Major Development and Infrastructure from 2019 to Present

Property or Development Name	Type of Development	# of Units / Structures	Location (address and/or block and lot)	Known Hazard Zones*	Description / Status of Development
None Identified					

* Only location-specific hazard zones or vulnerabilities identified.



Table 6-12. Known or Anticipated Major Development and Infrastructure in the Next Five Years

Property or Development Name	Type of Development	# of Units / Structures	Location (address and/or block and lot)	Known Hazard Zones*	Description / Status of Development
None Identified					

6.6 JURISDICTIONAL RISK ASSESSMENT

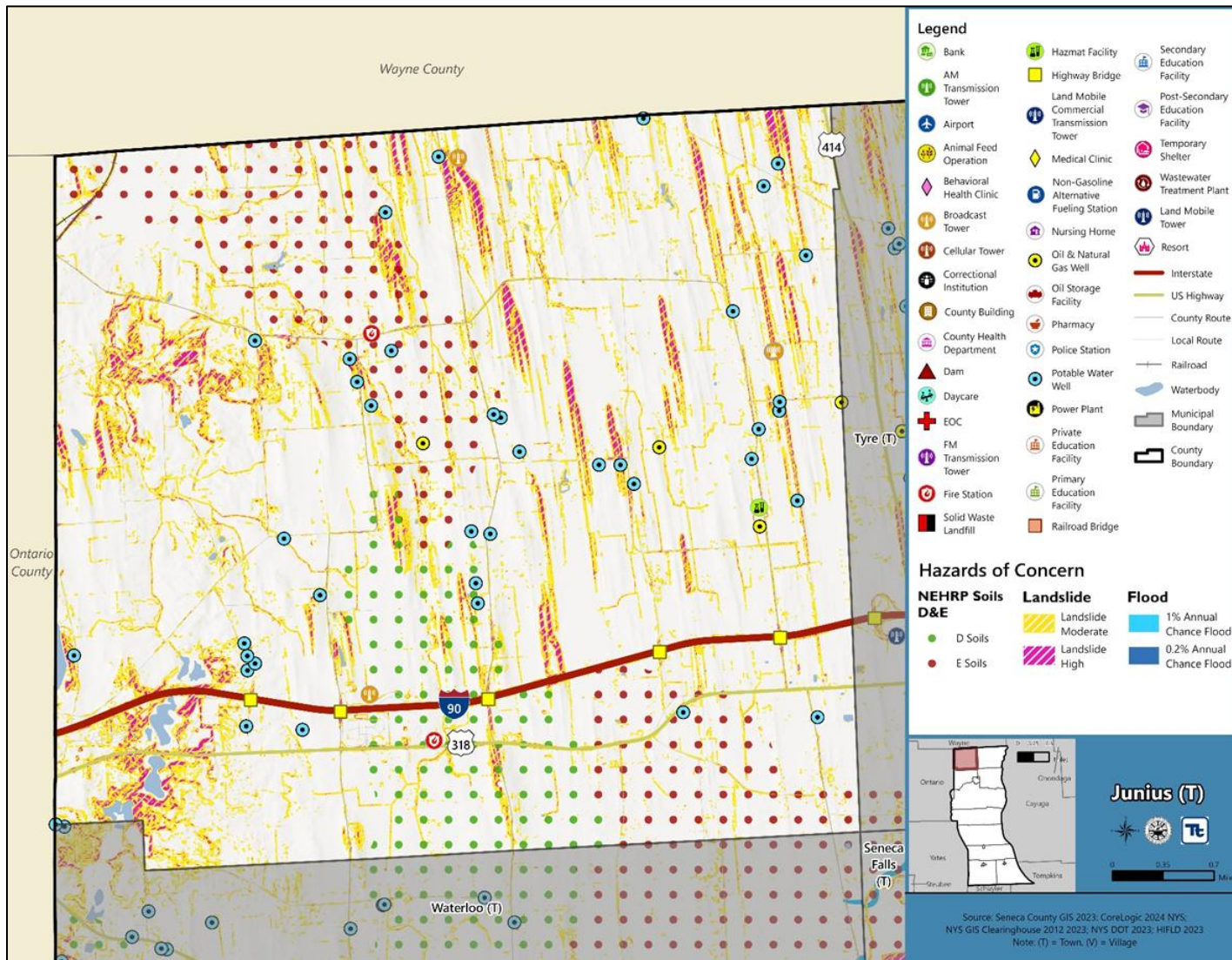
The hazard profiles in Volume I provide detailed information regarding each planning partner’s vulnerability to the identified hazards, including summaries of the Town of Junius’ risk assessment results and data used to determine the hazard ranking. Key local risk assessment information is presented below.

6.6.1 Hazard Area

Hazard area extent and the location map provided below illustrates the probable areas impacted within the Town based on the best available data at the time of the preparation of this plan and are adequate for planning purposes. A map for the hazards that have impacted the Town of Covert is included below.



Figure 6-1. Town of Junius Hazard Area Extent and Location Map



Note: The shown flood hazard area is limited to the FEMA-defined flood hazard areas. Areas of localized flooding are not reflected in the above Figure.



6.6.2 Hazard Event History

The history of natural and non-natural hazard events in the Town of Junius is detailed in Volume I, where each hazard profile includes a chronology of historical events that have affected the County and its municipalities. Table 6-13 provides details on loss and damage in the Town of Junius during hazard events since the last hazard mitigation plan update.

Table 6-13. Hazard Event History in the Town of Junius

Dates of Event	Event Type (Disaster Declaration)	County Designated?	Summary of Event	Summary of Damage and Losses in the Town of Junius
August 13 - 15, 2018	Flood (DR- 4397)	Yes	A slow-moving storm tracked north from New Jersey to northern New York. This system triggered several rounds of heavy rain producing thunderstorms which caused severe flash flooding and major damages in several locations.	The Town did not incur any documented damages or losses.
January 20, 2020 - May 11, 2023	Pandemic (DR-4480, EM-3434)	Yes	The coronavirus pandemic resulted in roughly 8,000 cases and 100 attributed deaths as of summer 2023.	The Town abided by the masking mandates, social distancing requirements and work from home procedures.

EM = Emergency Declaration (FEMA)
 FEMA = Federal Emergency Management Agency
 DR = Major Disaster Declaration (FEMA)
 N/A = Not applicable

6.6.3 Hazard Ranking and Vulnerabilities

The hazard profiles in Volume I have detailed information regarding each planning partner’s vulnerability to the identified hazards. The following presents key risk assessment results for the Town of Junius.

Hazard Ranking

The participating jurisdictions have differing degrees of vulnerability to the hazards of concern, so each jurisdiction ranked its own degree of risk to each hazard. The community-specific hazard ranking is based on problems and impacts identified by the risk assessment presented in Volume I. The ranking process involves an assessment of the likelihood of occurrence for each hazard; the potential impacts of the hazard on people, property, and the economy; community capabilities to address the hazard; and changing future climate conditions. The Town of Junius reviewed the County hazard ranking and individual results to assess the relative risk of the hazards of concern to the community. During the review of the hazard ranking, the Town indicated that they agree with the preliminary rankings.

Table 6-14 shows the Town of Junius’ final hazard rankings for identified hazards of concern. Mitigation action development uses the ranking to target hazards with the highest risk.



Table 6-14. Hazard Ranking Input

Hazard	Rank
Dam Failure	Low
Drought	Low
Earthquake	Medium
Extreme Temperature	Medium
Flood	Low
Landslide	Low
Severe Weather	High
Severe Winter Weather	Medium

Note: The scale is based on the hazard rankings established in Volume I, modified as appropriate based on review by the jurisdiction

Critical Facilities

Table 6-15 identifies critical facilities in the community located in the 1 percent and 0.2 percent annual chance floodplains.

Table 6-15. Critical Facilities Flood Exposure

Name	Type	Exposure		Addressed by Proposed Action	Already Protected to 0.2% Flood Level (describe protections)
		1% Event	0.2% Event		
There were no critical facilities located within the flood hazard areas.					

Source: Seneca County GIS 2023, NYS GIS Clearinghouse 2023, NYSDOH 2023, NYSDOT 2023, HIFLD 2023

6.6.4 Identified Issues

After review of the Town of Junius' hazard event history, hazard rankings, hazard location, and current capabilities, the Town of Junius identified the following vulnerabilities within the community:

- The Town does not have any organizations that conduct outreach to socially vulnerable populations and underserved populations relating to the identified hazards of concern. Identifying, communicating, and educating vulnerable populations can increase the resiliency of the Town through the reduction of long-term risks associated with each hazard of concern. Furthermore, emergency responders will be able to prioritize assistance, when feasible, in an emergency to help those who need it most.
- The County issues the municipality's building permits. The municipality does not have a Substantial Damage Management Plan in place, nor do they have a formal process in place when conducting substantial damage determinations. The municipality is in need of a formal process and plan to provide a framework for conducting such inspections and determinations.
- The Town incurs some impacts of flooding. The Town is not currently a part of the NFIP and wants to join to be able to partake in the benefits of the program.
- Spring ice dams form along Avery Road (north of New Miller Road) in road ditches which causes road flooding and shoulder damages which sometimes results in road closures and reduced access.



- Spring ice and storm debris back-up culverts which causes road flooding, shoulder damage, hazardous travel and road closures. Enlarged culvert capacity is required to keep the drainage ways open during higher flows and bank stabilization to prevent road damage is also needed. One culvert is located along West Townline Road, and the other is located on Avery Road (near Justice Road).

6.7 MITIGATION STRATEGY AND PRIORITIZATION

This section discusses the status of mitigation actions from the previous HMP, describes proposed hazard mitigation actions, and prioritizes actions to address over the next five years.

6.7.1 Past Mitigation Action Status

Table 6-16 indicates progress on the Town's mitigation strategy identified in the 2019 HMP. Actions that are still recommended but not completed or that are in progress are carried forward and combined with new actions as part of the mitigation strategy for this plan update. Previous actions that are now ongoing programs and capabilities are indicated as such and are presented in the capability assessment earlier in this annex.



Table 6-16. Status of Previous Mitigation Actions

Project Number	Project Name	Hazard(s) Addressed	Responsible Party	Brief Summary of the Original Problem and the Solution (Project)	Action Review 1. Status (In Progress, Ongoing Capability, No Progress, Complete) 2. Provide a narrative to describe progress or obstacles that have prevented implementation	Next Steps 1. Project to be included in the 2025 HMP or Discontinue 2. If including action in the 2025 HMP, revise/reword to be more specific (as appropriate). 3. If discontinue, explain why.
1	Reed Road	Flood	Highway Superintendent, Town Board	Problem: Repetitive damage to bridge abutment due to impeded flow and inadequate design. Solution: Evaluate flood mitigation measures.	1. No Progress 2. No longer an issue	1. Discontinue 2. Not applicable 3. No longer an issue
2	Desmond Road	Flood	Highway Superintendent, Town Board	Problem: Debris builds in ditch on private property resulting in flooding that washes away the road shoulder. Solution: Evaluate flood mitigation measures.	1. No Progress 2. No longer an issue	1. Discontinue 2. Not applicable 3. No longer an issue
3	Avery Road (north of New Miller Rd)	Flood, Severe Winter Weather	Highway Superintendent, Town Board	Problem: Spring ice dams in ditch causing road flooding and shoulder damage. Solution: Evaluate flood mitigation measures.	1. No Progress 2. Town has applied for a grant	1. Include 2. Not applicable 3. Not applicable
4	West Townline Road	Flood, Severe Weather	Highway Superintendent, Town Board	Problem: Storm debris plugs the railroad culvert, and the road shoulder is washed away. Solution: Increase the capacity of the culvert on West Townline.	1. No Progress 2. Funding and staffing issues prevent further progress	1. Include 2. Not applicable 3. Not applicable
5	Avery Road (near Justice Rd)	Flood, Severe Winter Weather	Highway Superintendent, Town Board	Problem: Spring ice and storm debris back-up at this culvert causing road flooding, shoulder damage, hazardous travel and closing of the road. An enlarged culvert capacity is required to keep this drainageway	1. No Progress 2. Town has applied for a grant	1. Include 2. Not applicable 3. Not applicable



Project Number	Project Name	Hazard(s) Addressed	Responsible Party	Brief Summary of the Original Problem and the Solution (Project)	Action Review 1. Status (In Progress, Ongoing Capability, No Progress, Complete) 2. Provide a narrative to describe progress or obstacles that have prevented implementation	Next Steps 1. Project to be included in the 2025 HMP or Discontinue 2. If including action in the 2025 HMP, revise/reword to be more specific (as appropriate). 3. If discontinue, explain why.
				<p>open during high flows and bank stabilization is needed to prevent road damage.</p> <p>Solution: Increase the capacity of the culvert on Avery Road.</p>		
6	NFIP Community Participation	Flood	Mayor, Town Board	<p>Problem: The Town does not participate in the NFIP.</p> <p>Solution: Work with County, State, and Federal officials to consider community participation in the National Flood Insurance Program.</p>	<p>1. No Progress 2. Staffing unavailable to evaluate participation</p>	<p>1. Include 2. Not applicable 3. Not applicable</p>



6.7.2 Proposed Hazard Mitigation Actions for the HMP Update

The Town of Junius participated in a mitigation action workshop in September 2024 and was provided the following FEMA publications to use as a resource as part of its comprehensive review of all possible activities and mitigation measures to address hazards of concern:

- FEMA 551 “Selecting Appropriate Mitigation Measures for Floodprone Structures” (March 2007)
- FEMA “Mitigation Ideas—A Resource for Reducing Risk to Natural Hazards” (January 2013).

The action worksheets included at the end of this annex list the mitigation actions that the Town of Junius would like to pursue in the future to reduce the effects of hazards. The actions are dependent upon available funding (grants and local match availability) and may be modified or omitted at any time based on the occurrence of new hazard events and changes in Town priorities.

Table 6-17 indicates the range of proposed mitigation action categories. The four FEMA mitigation action categories and the six CRS mitigation action categories are listed in the table to further demonstrate the wide range of activities and mitigation measures selected.

Volume I identifies 14 evaluation criteria for prioritizing the mitigation actions. To assist with rating each mitigation action as high, medium, or low priority, a numeric rank is assigned (-1, 0, or 1) for each of the evaluation criteria. Table 6-18 provides a summary of the prioritization of all proposed mitigation actions for the HMP update.



Table 6-17. Analysis of Mitigation Actions by Hazard and Category

Hazard	Actions That Address the Hazard, by Action Category									
	FEMA				CRS					
	LPR	SIP	NSP	EAP	PR	PP	PI	NR	SP	ES
Dam Failure	X	-	-	X	X	-	X	-	-	X
Drought	-	-	-	X	-	-	X	-	-	-
Earthquake	X	-	-	X	X	-	X	-	-	X
Extreme Temperatures	-	-	-	X	-	-	X	-	-	-
Flood	X	X	-	X	X	X	X	-	X	X
Landslide	X	-	-	X	X	-	X	-	-	X
Severe Storm	X	X	-	X	X	X	X	-	X	X
Severe Winter Storm	X	X	-	X	X	X	X	-	X	X

- Local Plans and Regulations (LPR)*—These actions include government authorities, policies or codes that influence the way land and buildings are being developed and built.
- Structure and Infrastructure Project (SIP)*—These actions involve modifying existing structures and infrastructure to protect them from a hazard or remove them from a hazard area. This could apply to public or private structures as well as critical facilities and infrastructure. This type of action also involves projects to construct structures to reduce the impact of hazards.
- Natural Systems Protection (NSP)*—These are actions that minimize damage and losses and preserve or restore the functions of natural systems.
- Education and Awareness Programs (EAP)*—These are actions to inform and educate citizens, elected officials, and property owners about hazards and potential ways to mitigate them. These actions may also include participation in national programs, such as StormReady and Firewise Communities
- Preventative Measures (PR)*—Government, administrative or regulatory actions, or processes that influence the way land and buildings are developed and built. Examples include planning and zoning, floodplain local laws, capital improvement programs, open space preservation, and storm water management regulations.
- Property Protection (PP)*—These actions include public activities to reduce hazard losses or actions that involve (1) modification of existing buildings or structures to protect them from a hazard or (2) removal of the structures from the hazard area. Examples include acquisition, elevation, relocation, structural retrofits, storm shutters, and shatter-resistant glass.
- Public Information (PI)*—Actions to inform and educate citizens, elected officials, and property owners about hazards and potential ways to mitigate them. Such actions include outreach projects, real estate disclosure, hazard information centers, and educational programs for school-age children and adults.
- Natural Resource Protection (NR)*—Actions that minimize hazard loss and preserve or restore the functions of natural systems. These actions include sediment and erosion control, stream corridor restoration, watershed management, forest and vegetation management, and wetland restoration and preservation.
- Structural Flood Control Projects (SP)*—Actions that involve the construction of structures to reduce the impact of a hazard. Such structures include dams, setback levees, floodwalls, retaining walls, and safe rooms.
- Emergency Services (ES)*—Actions that protect people and property during and immediately following a disaster or hazard event. Services include warning systems, emergency response services, and the protection of essential facilities



Table 6-18. Summary of Prioritization of Actions

Project Number	Project Name	Scores for Evaluation Criteria														High / Medium / Low	
		Life Safety	Property Protection	Cost-Effectiveness	Political	Legal	Fiscal	Environmental	Social Vulnerability	Administrative	Hazards of Concern	Climate Change	Timeline	Community Lifelines	Other Local Objectives		Total
2025-JuniusT-01	Socially Vulnerable Populations Outreach	1	0	1	1	1	1	0	1	1	1	1	1	0	1	11	High
2025-JuniusT-02	Substantial Damage Management Plan	1	1	1	1	1	1	0	1	1	1	1	1	0	0	11	High
2025-JuniusT-03	Join the NFIP	1	1	1	1	1	0	0	1	1	1	1	1	1	0	11	High
2025-JuniusT-04	Flood Prone Road Mitigation	1	1	1	1	1	0	1	1	1	1	1	1	0	0	11	High
2025-JuniusT-05	Culvert Study	1	1	1	1	1	0	1	1	1	1	1	1	0	0	11	High

Note: Volume I, Section 16 (Mitigation Strategy) conveys guidance on prioritizing mitigation actions. Low (0-6), Medium (7-10), High (11-14).



Action 2025-JuniusT-01. Socially Vulnerable Populations Outreach

Lead Agency:	Planning Board	
Supporting Agencies:	Seneca County Emergency Management	
Hazard(s) of Concern:	<input checked="" type="checkbox"/> Dam Failure <input checked="" type="checkbox"/> Drought <input checked="" type="checkbox"/> Earthquake <input checked="" type="checkbox"/> Extreme Temperature	<input checked="" type="checkbox"/> Flood <input checked="" type="checkbox"/> Landslide <input checked="" type="checkbox"/> Severe Storm <input checked="" type="checkbox"/> Severe Winter Storm
Description of the Problem:	The Town does not have any organizations that conduct outreach to socially vulnerable populations and underserved populations relating to the identified hazards of concern. Identifying, communicating, and educating vulnerable populations can increase the resiliency of the Town through the reduction of long-risk risks associated with each hazard of concern. Furthermore, emergency responders will be able to prioritize assistance, when feasible, in an emergency to help those who need it most.	
Description of the Solution:	Create outreach materials, or utilize those from Seneca County, on hazard risks and methods of mitigation measures for socially vulnerable populations, including dam failure, drought, earthquake, extreme temperature, flood, landslide, severe storm, and severe winter storm. Methods of distribution may include Town events, the Town newsletters, social media, the Town website, and having the materials on display for the public at Town libraries and offices. Consider hiring staff to work directly with socially vulnerable populations. Outreach materials will be specified with education and information for each individual hazard of concern, with measures identified which can assist in reducing long-term risk to the identified hazards of concern.	
Estimated Cost:	Staff Time	
Potential Funding Sources:	Town Budget, HMGP	
Implementation Timeline:	Within 3 Years, ongoing after established	
Goals Met:	1, 3, 4, 6	
Benefits:	This action will ensure there is an individual working to identify and work with the socially vulnerable populations in the Town. Furthermore, this action will create opportunities to educate and inform populations on hazard risks.	
Impact on Socially Vulnerable Populations:	Socially vulnerable populations in the Town will become educated on hazards and risks. The Town will identify an individual to identify and work with these populations to ensure the most up-to-date information is being shared.	
Impact on Future Development:	N/A	
Impact on Critical Facilities/Lifelines:	Educating populations on hazard risk and how to mitigate the risks can decrease the demand for utilities and emergency services including health and medical, law enforcement, and search and rescue.	
Impact on Capabilities:	This action would build upon the Town's public education and outreach program.	
Climate Change Considerations:	Climate change is likely to increase the intensity and frequency of many climate-related disaster events. This action will inform residents and business owners of how to reduce risk from hazards and how climate change may exacerbate those risks.	
Mitigation Category	<input type="checkbox"/> Local Plans and Regulations (LPR) <input type="checkbox"/> Structure and Infrastructure Project (SIP)	<input type="checkbox"/> Natural Systems Protection (NSP) <input checked="" type="checkbox"/> Education and Awareness Programs (EAP)
CRS Category	<input type="checkbox"/> Preventative Measures (PR) <input type="checkbox"/> Property Protection (PP) <input checked="" type="checkbox"/> Public Information (PI)	<input type="checkbox"/> Natural Resource Protection (NR) <input type="checkbox"/> Structural Flood Control Projects (SP) <input type="checkbox"/> Emergency Services (ES)
Priority	<input checked="" type="checkbox"/> High	<input type="checkbox"/> Medium
Alternatives	Action	
	No action	
	Rely on state or federal resources	
	Use only a few methods for distribution	
		Evaluation
		Current problem continues
		Resources may be generalized and not specific to the risks in the Town
		Using only a few methods of distribution may hinder socially vulnerable populations from receiving guidance



Action 2025- JuniusT-02. Substantial Damage Management Plan

Lead Agency:	Planning Board	
Supporting Agencies:	Seneca County Code Enforcement	
Hazard(s) of Concern:	<input type="checkbox"/> Dam Failure <input type="checkbox"/> Drought <input type="checkbox"/> Earthquake <input type="checkbox"/> Extreme Temperature	<input checked="" type="checkbox"/> Flood <input type="checkbox"/> Landslide <input checked="" type="checkbox"/> Severe Storm <input type="checkbox"/> Severe Winter Storm
Description of the Problem:	<p>Officials in NFIP-participating communities are responsible for regulating all development in SFHAs by issuing permits and enforcing local floodplain requirements, including Substantial Damage, for the repairs of damaged buildings. After any disaster event including dam failure, earthquake, flood, landslide, severe storm, and severe storm, they must:</p> <ul style="list-style-type: none"> Determine where the damage occurred within the community and if the damaged structures are in an SFHA. Determine what to use for "market value" and cost to repair; uniformly applying regulations will protect against liability and promote equitable administration. Determine if repairing plus improving the damaged structure equals or exceeds 50% of the structure's pre-damage value. Require permits for floodplain development. <p>The County issues the municipality's building permits. The municipality does not have a Substantial Damage Management Plan in place, nor do they have a formal process in place when conducting substantial damage determinations. The municipality is in need of a formal process and plan to provide a framework for conducting such inspections and determinations.</p>	
Description of the Solution:	<p>The municipality will work with the County to develop a Substantial Damage Management Plan, following the six-step planning process in 2021 Developing a Substantial Damage Management Plan (https://crsresources.org/files/500/developing_subst_damage_mgmt_plan.pdf). This plan will outline responsibilities for Substantial Damage determinations, determining market value, and permit approval processes following a disaster event.</p>	
Estimated Cost:	Staff Time	
Potential Funding Sources:	Town Budget, County Budget	
Implementation Timeline:	Within 5 years to develop the plan; ongoing to maintain and update the plan	
Goals Met:	1, 3, 4, 5	
Benefits:	This plan will provide a process in making Substantial Damage Determinations and allow the municipality to make these determinations and meet NFIP requirements more quickly.	
Impact on Socially Vulnerable Populations:	Substantially damaged structures are required to be rebuilt to be compliance with current codes. Socially vulnerable populations may not have the financial means to make these improvements. This action may allow for the identification of potential resources to address substantial damages to structures owned by socially vulnerable populations.	
Impact on Future Development:	A Substantial Damage Management Plan would include all existing, current, and future development in the municipality.	
Impact on Critical Facilities/Lifelines:	A Substantial Damage Management Plan would include all critical facilities and lifelines in the municipality.	
Impact on Capabilities:	This action improves disaster recovery capabilities.	
Climate Change Considerations:	Climate change is likely to increase the intensity and frequency of many climate related disaster events. This action provides additional planning for disaster recovery.	
Mitigation Category	<input checked="" type="checkbox"/> Local Plans and Regulations (LPR) <input type="checkbox"/> Structure and Infrastructure Project (SIP)	<input type="checkbox"/> Natural Systems Protection (NSP) <input type="checkbox"/> Education and Awareness Programs (EAP)
CRS Category	<input checked="" type="checkbox"/> Preventative Measures (PR) <input type="checkbox"/> Property Protection (PP) <input type="checkbox"/> Public Information (PI)	<input type="checkbox"/> Natural Resource Protection (NR) <input type="checkbox"/> Structural Flood Control Projects (SP) <input checked="" type="checkbox"/> Emergency Services (ES)
Priority	<input checked="" type="checkbox"/> High	<input type="checkbox"/> Medium <input type="checkbox"/> Low
Alternatives	Action	
	No action	Evaluation Current problem continues



	Rely on state or federal resources following disaster events	Resources may not be available during major widespread events
	Establish MOUs with outside agencies to conduct Substantial Damage Determinations	A plan outlining responsibility is still necessary to prevent missing important requirements



Action 2025- JuniusT-03. Join the NFIP

Lead Agency:	Town Administration		
Supporting Agencies:	Town Code Enforcement		
Hazard(s) of Concern:	<input type="checkbox"/> Dam Failure <input type="checkbox"/> Drought <input type="checkbox"/> Earthquake <input type="checkbox"/> Extreme Temperature	<input checked="" type="checkbox"/> Flood <input type="checkbox"/> Landslide <input type="checkbox"/> Severe Storm <input type="checkbox"/> Severe Winter Storm	
Description of the Problem:	The Town incurs some impacts of flooding. The Town is not currently a part of the NFIP and wants to join to be able to partake in the benefits of the program.		
Description of the Solution:	The Town will work with the County, State, and Federal officials to consider community participation in the National Flood Insurance Program by completing an application and adopting a resolution of intent to participate and cooperate with FEMA, as well as adopting and submitting a floodplain management ordinance that meets or exceeds the minimum NFIP criteria.		
Estimated Cost:	Staff Time		
Potential Funding Sources:	Town Budget, County Budget		
Implementation Timeline:	Within 5 Years		
Goals Met:	1, 2, 3, 4, 5, 6		
Benefits:	The Town will be able to reap the benefits of the NFIP.		
Impact on Socially Vulnerable Populations:	Socially vulnerable populations will have access to more affordable flood insurance.		
Impact on Future Development:	N/A		
Impact on Critical Facilities/Lifelines:	Critical facilities that are impacted by flooding will have insurance benefits.		
Impact on Capabilities:	This action improves flood protection capabilities.		
Climate Change Considerations:	Climate change is increasing frequency and intensity of precipitation events and is leading to an increase in flood events.		
Mitigation Category:	<input checked="" type="checkbox"/> Local Plans and Regulations (LPR) <input type="checkbox"/> Structure and Infrastructure Project (SIP)	<input type="checkbox"/> Natural Systems Protection (NSP) <input type="checkbox"/> Education and Awareness Programs (EAP)	
CRS Category:	<input checked="" type="checkbox"/> Preventative Measures (PR) <input checked="" type="checkbox"/> Property Protection (PP) <input type="checkbox"/> Public Information (PI)	<input type="checkbox"/> Natural Resource Protection (NR) <input type="checkbox"/> Structural Flood Control Projects (SP) <input type="checkbox"/> Emergency Services (ES)	
Priority:	<input checked="" type="checkbox"/> High	<input type="checkbox"/> Medium	<input type="checkbox"/> Low
Alternatives:	Action		Evaluation
	No Action		-
	Obtain private insurance		Not cost effective
	Join and do not enforce codes		Will not be a part of NFIP



Action 2025- JuniusT-04. Flood Prone Road Mitigation

Lead Agency:	Highway Superintendent		
Supporting Agencies:	Town Board		
Hazard(s) of Concern:	<input type="checkbox"/> Dam Failure <input type="checkbox"/> Drought <input type="checkbox"/> Earthquake <input type="checkbox"/> Extreme Temperature	<input checked="" type="checkbox"/> Flood <input type="checkbox"/> Landslide <input checked="" type="checkbox"/> Severe Storm <input checked="" type="checkbox"/> Severe Winter Storm	
Description of the Problem:	Spring ice dams form along Avery Road (north of New Miller Road) in road ditches which causes road flooding and shoulder damages which sometimes results in road closures and reduced access.		
Description of the Solution:	The Town will develop specific mitigation solutions for the flood-prone road system under the leadership of the highway superintendent.		
Estimated Cost:	TBD after solution is determined		
Potential Funding Sources:	BRIC, HMGP, FMA, Town Budget		
Implementation Timeline:	Within 5 Years		
Goals Met:	1, 2, 3, 4		
Benefits:	This action will identify measures to protect infrastructure in the transportation lifeline, which will lead to the assurance of clear roadways for evacuations, regular travel, and emergency responses.		
Impact on Socially Vulnerable Populations:	This action will assist socially vulnerable populations whose properties are impacted by flooding along flood-prone roads.		
Impact on Future Development:	Future development in the impacted area will be less likely to be flooded.		
Impact on Critical Facilities/Lifelines:	This action will identify measures to protect infrastructure in the transportation lifeline, which will lead to the assurance of clear roadways for evacuations, regular travel, and emergency responses.		
Impact on Capabilities:	This increases the Town's emergency response capability by reducing the flooding.		
Climate Change Considerations:	A warmer atmosphere means storms have the potential to be more intense and occur more often, including increased periods of intense rain events.		
Mitigation Category:	<input checked="" type="checkbox"/> Local Plans and Regulations (LPR) <input type="checkbox"/> Structure and Infrastructure Project (SIP)	<input type="checkbox"/> Natural Systems Protection (NSP) <input type="checkbox"/> Education and Awareness Programs (EAP)	
CRS Category:	<input checked="" type="checkbox"/> Preventative Measures (PR) <input checked="" type="checkbox"/> Property Protection (PP) <input type="checkbox"/> Public Information (PI)	<input type="checkbox"/> Natural Resource Protection (NR) <input type="checkbox"/> Structural Flood Control Projects (SP) <input type="checkbox"/> Emergency Services (ES)	
Priority:	<input checked="" type="checkbox"/> High	<input type="checkbox"/> Medium	<input type="checkbox"/> Low
Alternatives:	Action	Evaluation	
	No Action	-	
	Relocate all flood-prone road system	Not feasible	
	Raise all flood prone roads	Cost prohibitive	



Action 2025- JuniusT-05. Culvert Study

Lead Agency:	Highway Superintendent		
Supporting Agencies:	Town Board		
Hazard(s) of Concern:	<input type="checkbox"/> Dam Failure <input type="checkbox"/> Drought <input type="checkbox"/> Earthquake <input type="checkbox"/> Extreme Temperature	<input checked="" type="checkbox"/> Flood <input type="checkbox"/> Landslide <input checked="" type="checkbox"/> Severe Storm <input checked="" type="checkbox"/> Severe Winter Storm	
Description of the Problem:	Spring ice and storm debris back-up culverts which causes road flooding, shoulder damage, hazardous travel and road closures. Enlarged culvert capacity is required to keep the drainage ways open during higher flows and bank stabilization to prevent road damage is also needed. One culvert is located along West Townline Road, and the other is located on Avery Road (near Justice Road).		
Description of the Solution:	The Town will complete an engineering survey of culverts located on West Townline Road and Avery Road that are undersized and contribute to flooding to determine the proper size necessary to provide stormwater capacity. The Town will complete the necessary upsizing and bank stabilization for those culverts.		
Estimated Cost:	TBD after study		
Potential Funding Sources:	BRIC, HMGP, FMA, Town Budget		
Implementation Timeline:	Within 5 Years		
Goals Met:	1, 2, 3, 4		
Benefits:	Overall flooding will be reduced, which will result in less frequency of road closures and reduced damage occurring to culverts and roadways during severe events. Businesses are likely to remain in place if they are able to remain open, or re-open sooner following a flood.		
Impact on Socially Vulnerable Populations:	Areas that were previously vulnerable to frequency or severe flooding events will be less likely to be impacted by flooding events.		
Impact on Future Development:	Future development in the impacted area will be less likely to be flooded.		
Impact on Critical Facilities/Lifelines:	<ul style="list-style-type: none"> • Transportation routes are more likely to remain open • Evacuation routes will remain intact. • Access to health and medical facilities will be maintained, both for healthcare workers and the population who requires treatment for injuries and illness. 		
Impact on Capabilities:	Identifying the culverts that are at greatest risk of damage or failure can allow for resource staging to take place where the need is greatest ahead of a flood event.		
Climate Change Considerations:	Climate change is likely to result in more frequent and severe rainfall events. This action upsizes culvert sizes to meet changing stormwater needs as the result of climate change.		
Mitigation Category:	<input type="checkbox"/> Local Plans and Regulations (LPR) <input checked="" type="checkbox"/> Structure and Infrastructure Project (SIP)	<input type="checkbox"/> Natural Systems Protection (NSP) <input type="checkbox"/> Education and Awareness Programs (EAP)	
CRS Category:	<input type="checkbox"/> Preventative Measures (PR) <input type="checkbox"/> Property Protection (PP) <input type="checkbox"/> Public Information (PI)	<input type="checkbox"/> Natural Resource Protection (NR) <input checked="" type="checkbox"/> Structural Flood Control Projects (SP) <input type="checkbox"/> Emergency Services (ES)	
Priority:	<input checked="" type="checkbox"/> High	<input type="checkbox"/> Medium	<input type="checkbox"/> Low
Alternatives:	Action	Evaluation	
	No Action	-	
	Remove roadway	Roadway cannot be removed	
	Raingardens	Raingardens are unlikely to be able to absorb enough stormwater to prevent flooding during severe rainfall events.	